



Jul 26, 2025

**Listing ID** 2025.244.682

**Type of Item** loom

**Manufacturer** Schacht

**Description** 7 years old. Original owner. Perfect condition. Loom is assembled and warped for "test drives." Owner will assist in taking loom apart. Retail price with accessories was \$12k.

**Location of Item** Pittsfield, MA

**Type of Loom** Countermarche

**Loom Model** Cranbrook

**Weaving Width** 48 inches

**No. Shafts** 8

**No. Treadles** 10

**Included Equipment** 48" Cranbrook Bench  
Sliding Threading Bench  
Tool shelf with light  
5 Reeds (6, 8, 10, 12, 15)  
Raddle  
Beater weight  
Sectional warp beam  
Tension box rail  
Tension box  
Spool rack  
Yardage counter  
Miscellaneous shuttles, lease sticks, warping sticks

**Asking Price** \$2000.00 PRICE  
REDUCED

**Method** Cash

**When Available** now

**Willing to Ship?** No

**More Pictures Available?** Yes





Jul 27, 2025

**Listing ID** 2025.243.683

**Type of Item** loom

**Manufacturer** Macomber

**Description** Floor loom with double warp beams. Comes with many extra heddles. Very good working condition. Have been weaving on it continuously.

**Location of Item** Tiverton, RI

**Type of Loom** Jack

**Loom Model**

**Weaving Width** 40

**No. Shafts** 8

**No. Treadles** 10

**Included Equipment**

**Asking Price** \$1450 PRICE  
REDUCED  
**When Available** now

**Method** Cash

**Willing to Ship?** No

**More Pictures Available?** Yes





Aug 17, 2025

**Listing ID** 2025.242.478

**Type of Item** loom

**Manufacturer** OTHER

**Description** This loom was designed by Osma Todd Gallinger and may be found pictured in some of her books. It is a beautiful, heavy rug loom made of cherry wood and cast iron hardware. The 4 treadles are quite wide. The sectional warp beam is missing some pegs. The friction brake arrangement is needing attention. It is probably 80 years old. May we all age so well....

**Location of Item** Lincolnville Beach, Maine

**Type of Loom** Counterbalance

**Loom Model**

**Weaving Width** 45"

**No. Shafts** 4

**No. Treadles** 4

**Included Equipment**

**Asking Price** \$400

**Method** cash at pickup

**When Available** now

**Willing to Ship?** No

**More Pictures Available?** No



Aug 16, 2025

**Listing ID** 2025.241.689

**Type of Item** spinning wheel

**Manufacturer**

**Description** Antique French spinning wheel with bone or ivory accents. Fragile; needs some repair; may be only for display. Good provenance documentation. Must find a good home. Contact for pick-up/meet-up information.

**Location of Item** Brattleboro, Vermont

**Type of Loom**

**Loom Model**

**Weaving Width**

**No. Shafts**

**No. Treadles**

**Included Equipment**

**Asking Price** Free to a good home

**Method**

**When Available** now

**Willing to Ship?** No

**More Pictures Available?** Yes





<b>Listing ID</b>	2025.240.598		
<b>Type of Item</b>	spinning wheel		
<b>Manufacturer</b>	Kromski		
<b>Description</b>	Kromski Polonaise Walnut Spinning Wheel		
<b>Location of Item</b>	Wellfleet, MA		
<b>Type of Loom</b>			
<b>Loom Model</b>			
<b>Weaving Width</b>			
<b>No. Shafts</b>	<b>No. Treadles</b>		
<b>Included Equipment</b>			
<b>Asking Price</b>	350	<b>Method</b>	cash
<b>When Available</b>	now		
<b>Willing to Ship?</b>	No	<b>More Pictures Available?</b>	Yes





Aug 12, 2025

**Listing ID** 2025.239.598

**Type of Item** loom

**Manufacturer** Clement

**Description** Solid Maple 55" Loom. Made In Canada. Excellent Condition.

**Location of Item** Wellfleet, MA

**Type of Loom** Rigid Heddle

**Loom Model**

**Weaving Width** 45

**No. Shafts** 4

**No. Treadles**

**Included Equipment** Includes Maple Weavers Bench, Warping Board, Multiple Bobbins And Shuttles.

**Asking Price** 650

**Method** cash

**When Available** now

**Willing to Ship?** No

**More Pictures Available?** Yes





Aug 12, 2025

**Listing ID** 2025.238.688

**Type of Item** loom

**Manufacturer** Harrisville Designs

**Description** Built 1987, in good condition and is warped and in use. Loom is just too large for my space now.

**Location of Item** Manchester-by-the-sea, MA

**Type of Loom** Jack

**Loom Model** Home

**Weaving Width** 50"

**No. Shafts** 8

**No. Treadles** 10

**Included Equipment** (3) reeds (8, 10, 12), raddle, lease sticks, sectional warp beam (not sure of the condition), castle tray

**Asking Price** \$2,500

**Method** Zelle, Certified Check

**When Available** now

**Willing to Ship?** No

**More Pictures Available?** Yes





Aug 12, 2025

**Listing ID** 2025.237.187

**Type of Item** loom

**Manufacturer** Ashford

**Description** 16 shaft table loom, 12 dent reed

**Location of Item** Petersham, Ma

**Type of Loom** Table

**Loom Model**

**Weaving Width** 24"

**No. Shafts** 16

**No. Treadles**

**Included Equipment** 12 dent reed, many extra heddles, lease sticks, original manual & booklets. Bought new in 2023, used once, lovely & thoughtful loom, doesn't fit my current needs.

**Asking Price** \$1000

**Method** Cash, check

**When Available** now

**Willing to Ship?** No

**More Pictures Available?** Yes







Aug 9, 2025

**Listing ID** 2025.236.492

**Type of Item** warping reel

**Manufacturer** Leclerc

**Description** Floor Warping Mill, excellent condition. 4 yds/rotation. Can warp up to 50 yards. 68" tall, 51" wide. Local pickup arranged during working hours at the weaving center (M-F 10-4). Your purchase supports our artisan weaving program for the blind and those over 55.

**Location of Item** Hartford, CT

**Type of Loom**

**Loom Model**

**Weaving Width**

**No. Shafts**

**No. Treadles**

**Included Equipment**

**Asking Price** \$650

**Method** Venmo, Paypal, Check

**When Available** now

**Willing to Ship?** No

**More Pictures Available?** No





Jul 6, 2025

**Listing ID** 2025.235.677

**Type of Item** loom

**Manufacturer** PRIVATE/SELF BUILT

**Description** antique loom built by Martin Gavette of Chester Pa in 1950. Made of redwood and some replacements parts of hardwood maple

**Location of Item** Danville, VT

**Type of Loom** Jack

**Loom Model**

**Weaving Width** 36"

**No. Shafts** 4

**No. Treadles** 6

**Included Equipment** more reeds, lease sticks, shuttles, warp rack, and threads

**Asking Price** \$100 - PRICE  
REDUCED

**Method** cash

**When Available** now

**Willing to Ship?** No

**More Pictures Available?** No





Aug 7, 2025

**Listing ID** 2025.234.687

**Type of Item** miscellaneous equipment

**Manufacturer** OTHER

**Description** A. Very large wall-sized warping board, approximately 5 feet by 8 feet.  
Currently disassembled but easy to reassemble.  
B. Spool/cone rack that holds 20 full size cones for sectional warping.  
Approximately 4 feet tall by 5 feet wide.

**Location of Item** Lowell, MA

**Type of Loom**

**Loom Model**

**Weaving Width**

**No. Shafts**

**No. Treadles**

**Included Equipment**

**Asking Price** \$250 for the pair  
OBO

**Method** PayPal, Cash

**When Available** now

**Willing to Ship?** No

**More Pictures Available?** No



Aug 5, 2025

**Listing ID** 2025.233.686

**Type of Item** loom

**Manufacturer** Union

**Description** Beautiful Union 36 in great condition.

**Location of Item** Andover,NH

**Type of Loom** Jack

**Loom Model**

**Weaving Width** 36

**No. Shafts** 2

**No. Treadles** 2

**Included Equipment**

**Asking Price** \$350

**Method** PayPal

**When Available** now

**Willing to Ship?** No

**More Pictures Available?** No



<b>Listing ID</b>	2025.231.684		
<b>Type of Item</b>	loom		
<b>Manufacturer</b>	UNKNOWN		
<b>Description</b>	See photo		
<b>Location of Item</b>	Essex, Massachusetts		
<b>Type of Loom</b>			
<b>Loom Model</b>			
<b>Weaving Width</b>	48"		
<b>No. Shafts</b>	4	<b>No. Treadles</b>	6
<b>Included Equipment</b>			
<b>Asking Price</b>	Free	<b>Method</b>	Free
<b>When Available</b>	now		
<b>Willing to Ship?</b>	No	<b>More Pictures Available?</b>	Yes





Jul 26, 2025

**Listing ID** 2025.228.681

**Type of Item** loom

**Manufacturer** UNKNOWN

**Description** The loom is handmade, high-end, and in excellent condition. 36 in. front to back, 49.5 wide and 3 feet high. But the back beam can be folded in, against the loom, in order to allow it to pass through a doorway easily or take up less space when not in use. It is an eight harness loom with 12 pedals, which gives it an amazing amount of design possibilities. The front beam is removable to allow for easier tie ups and threading. I am sorry that I can not recall the maker, but it was made in a small town in California. The bench (images in separate email to follow) is 30 x 14 x 23 high and has a slight slope towards the loom. It has a 3 in. deep drawer under the seat that slides sideways in either direction to hold tools etc. There are also six reeds ranging from 6 warp threads per inch to 16 warp threads per inch. All the tools needed to weave are included.

**Location of Item** New York, NY

**Type of Loom**

**Loom Model**

**Weaving Width**

**No. Shafts** 8

**No. Treadles** 12

**Included Equipment** Bench and weaving tools

**Asking Price** 4000

**Method** Zelle, cash, Venmo

**When Available** now

**Willing to Ship?** No

**More Pictures Available?** Yes



Jul 23, 2025

**Listing ID** 2025.226.680

**Type of Item** loom

**Manufacturer** UNKNOWN

**Description** Sabina Floor Loom  
4 shaft w/12-dent reed \*this is all the information I have.

**Location of Item** BAY SAINT LOUIS

**Type of Loom** Jack

**Loom Model**

**Weaving Width**

**No. Shafts** 4

**No. Treadles**

**Included Equipment** We have very little informaton on this loom that was given to us a few years ago. We have kept in our shed (weather proof) and are in desperate need of the storage space and none of our artists need.

**Asking Price** 500.00

**Method** Cash; Credit Card; Check

**When Available** now

**Willing to Ship?** No

**More Pictures Availiable?** No



Jul 20, 2025

**Listing ID** 2025.224.435

**Type of Item** spinning equipment

**Manufacturer** UNKNOWN

**Description** Drum carder, 4 inches wide  
Includes two clamps, cleaning brush, knitting needle.  
Gently used

**Location of Item** South Hadley, Massachusetts

**Type of Loom**

**Loom Model**

**Weaving Width**

**No. Shafts**

**No. Treadles**

**Included Equipment**

**Asking Price** \$250

**Method** cash, venmo, zelle

**When Available** now

**Willing to Ship?** Yes

**More Pictures Available?** Yes







Jul 20, 2025

**Listing ID** 2025.222.631

**Type of Item** loom

**Manufacturer** Leclerc

**Description** I am selling a 60 inch LeClerc Tissart upright tapestry loom.  
No Longer Produced

**Location of Item** La Conchita California

**Type of Loom** Tapestry

**Loom Model**

**Weaving Width** 60"

**No. Shafts** 2

**No. Treadles** 2

**Included Equipment** Billed as "A Tapestry Loom for Artists" this vertical loom has two counterbalanced shafts that slide horizontally along with 2 foot treadles and a beater that moved up and down. I has a section wrap beam which I do not use but are part of the original package sold in the 60 and 70s. Everything is original and in full and delightful working order. I bought this after searching two years produced a successful commission and now I have decided that rather than build anther studio to house it, I will put her back into The Universe for her next adventure!  
Your Location (City and State): La Conchita California

**Asking Price** 1800

**Method** All the ways

**When Available** now

**Willing to Ship?** Yes

**More Pictures Availiable?** No





Jul 6, 2025

**Listing ID** 2025.217.237

**Type of Item** loom

**Manufacturer** Glimakra

**Description** Original owner, purchased in 2013, very good condition. Includes counterbalance equipment, bench, four reeds: 6,8,10 and 12, texsolv heddles and tie ups, shaft holders and pins, warp sticks, lease sticks, a temple that extends to the full width of the loom and The Swedish Weaving Book.

**Location of Item** Buckland, MA

**Type of Loom** Countermarche

**Loom Model** Standard

**Weaving Width** 59 inches

**No. Shafts** 10

**No. Treadles** 10

**Included Equipment**

**Asking Price** 2500.00

**Method** cash or bank check

**When Available** now

**Willing to Ship?** No

**More Pictures Available?** Yes



Jun 30, 2025

**Listing ID** 2025.214.673

**Type of Item** loom

**Manufacturer** OTHER

**Description**

**Location of Item** Westlake, Ohio

**Type of Loom** Countermarche

**Loom Model** Cranbrook

**Weaving Width** 55"

**No. Shafts** 4

**No. Treadles** 6

**Included Equipment** Winder, bench, miscellany

**Asking Price** \$1,500

**Method** Cash

**When Available** now

**Willing to Ship?** No

**More Pictures Available?** No



Jun 24, 2025

**Listing ID** 2025.213.672

**Type of Item** loom

**Manufacturer** Leclerc

**Description** Model is the Mira. Made of Maple. Has a sectional warp beam

**Location of Item** Newbury, Vermont

**Type of Loom** Counterbalance

**Loom Model**

**Weaving Width** 45

**No. Shafts** 4

**No. Treadles** 6

**Included Equipment** Sturdy loom comes with a unused extra canvas apron, a 12 dent reed, a bundle of metal heddles and string heddles. A diagram of the loom and loom parts for setting up, a boat shuttle and bobbins, a reed hook, a homemade bench and a Warp and Weave book by Nilus Leclerc. Other equipment is available for small additional costs as well as weaving books.

**Asking Price** 250.00 OBO

**Method** cash

**When Available** now

**Willing to Ship?** No

**More Pictures Available?** Yes





Jun 8, 2025

**Listing ID** 2025.208.670

**Type of Item** loom

**Manufacturer** Norwood

**Description** Norwood floor loom, #992170,

**Location of Item** Portland, ME

**Type of Loom** Jack

**Loom Model**

**Weaving Width** 26"

**No. Shafts** 6

**No. Treadles** 8

**Included Equipment** In great condition, folds up and has wheels.

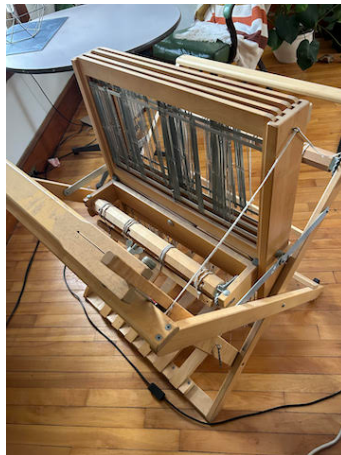
**Asking Price** 550

**Method** venmo, cash

**When Available** now

**Willing to Ship?** No

**More Pictures Available?** Yes





Nov 27, 2023

**Listing ID** 2025.205.005

**Type of Item** loom

**Manufacturer** AVL

**Description** This loom was donated to Weavers' Guild of Boston.  
AVL 48" 16S Compu-dobby with a sectional warp beam, auto fabric advance,  
fly shuttle.  
PRICE REDUCED

**Location of Item** LEOMINSTER, MA

**Type of Loom** Dobby - computer/electronic

**Loom Model**

**Weaving Width** 48"

**No. Shafts** 16

**No. Treadles**

**Included Equipment** Included Spool rack and box of spools, double ended electric bobbin winder  
with counter, shuttles, pirns and other small accessories.

**Asking Price** \$3500 + Tax PRICE  
REDUCED

**Method** cash, check, credit CARD

**When Available** now

**Willing to Ship?** No

**More Pictures Available?** No





Jun 2, 2025

**Listing ID** 2025.204.005

**Type of Item** loom

**Manufacturer** Glimakra

**Description** Includes bench  
3 reeds 8,10, and 12

**Location of Item** Leominster, MA

**Type of Loom** Countermarche

**Loom Model** Standard

**Weaving Width** 54"

**No. Shafts** 8

**No. Treadles** 10

**Included Equipment**

**Asking Price** \$2000.00 + tax

**Method** cash, check, credit card

**When Available** now

**Willing to Ship?** No

**More Pictures Available?** Yes



Jun 2, 2025

**Listing ID** 2025.203.005

**Type of Item** loom

**Manufacturer** AVL

**Description** AVL Production compu-dobby loom with sectional warp beam  
one owner  
built-in bench  
auto advance  
fly shuttle parts (not attached to loom)  
tension box  
shuttles

**Location of Item** Leominster, MA

**Type of Loom** Dobby - computer/electronic

**Loom Model**

**Weaving Width** 40"

**No. Shafts** 40

**No. Treadles** 2

**Included Equipment**

**Asking Price** \$2000.00 + tax

**Method** cash, check, credit card

**When Available** now

**Willing to Ship?** No

**More Pictures Available?** Yes





**Listing ID** 2025.202.005

**Type of Item** loom

**Manufacturer**

**Description** Cranbrook Loom with Shaft-Switching device. Great for weaving rugs.  
The shaft -switching device needs some TLC.

**Location of Item** Leominster, MA

**Type of Loom** Countermarche

**Loom Model**

**Weaving Width** 60"

**No. Shafts** 4

**No. Treadles** 10

**Included Equipment**

**Asking Price** \$1000.00 + tax

**Method** cash, check, credit card

**When Available** now

**Willing to Ship?** No

**More Pictures Available?** Yes





Jun 2, 2025

**Listing ID** 2025.201.668

**Type of Item** loom

**Manufacturer** Leclerc

**Description** Loom is in overall great condition. Stored in pieces at the moment. Could use a good cleaning and some small upgrades; new canvas aprons, warp rods, and shaft divider pegs.

**Location of Item** Brookline, MA

**Type of Loom** Jack

**Loom Model** Nilus

**Weaving Width** 60"

**No. Shafts** 4

**No. Treadles** 6

**Included Equipment**

**Asking Price** \$3000

**Method** Cash or check

**When Available** now

**Willing to Ship?** No

**More Pictures Available?** No



Apr 28, 2025

**Listing ID** 2025.196.556

**Type of Item** spinning wheel

**Manufacturer** Louet

**Description** S10 single treadle. Excellent working condition. 3 bobbins.

**Location of Item** Andover, MA

**Type of Loom**

**Loom Model**

**Weaving Width**

**No. Shafts**

**No. Treadles**

**Included Equipment**

**Asking Price** \$300 PRICE  
REDUCED

**Method** Cashiers check, Cash

**When Available** now

**Willing to Ship?** No

**More Pictures Available?** No





<b>Listing ID</b>	2025.192.434		
<b>Type of Item</b>	loom		
<b>Manufacturer</b>	Leclerc		
<b>Description</b>			
<b>Location of Item</b>	West Groton, Mass.		
<b>Type of Loom</b>	Counterbalance		
<b>Loom Model</b>			
<b>Weaving Width</b>	36 inch		
<b>No. Shafts</b>	4	<b>No. Treadles</b>	6
<b>Included Equipment</b>	warping board and assorted weaving supplies available.		
<b>Asking Price</b>	\$250.00	<b>Method</b>	Cash
<b>When Available</b>	now		
<b>Willing to Ship?</b>	No	<b>More Pictures Available?</b>	No





May 17, 2025

**Listing ID** 2025.188.662

**Type of Item** spinning wheel

**Manufacturer** UNKNOWN

**Description** Antique spinning wheel with parts. Been refinished in the 60s.

**Location of Item** Wolfeboro NH

**Type of Loom**

**Loom Model**

**Weaving Width**

**No. Shafts**

**No. Treadles**

**Included Equipment**

**Asking Price** \$300

**Method** Zelle Venmo

**When Available** now

**Willing to Ship?** No

**More Pictures Available?** Yes



May 9, 2025

**Listing ID** 2025.183.660

**Type of Item** loom

**Manufacturer** Schacht

**Description** Used once for teaching. Several available. Great for workshops.  
Fully assembled with stands and front traps. Everything included - clamps,  
warping peg, manual, stick shuttles

**Location of Item** Gilmanton, NH

**Type of Loom** Rigid Heddle

**Loom Model** Cricket

**Weaving Width** 15"

**No. Shafts** 2

**No. Treadles**

**Included Equipment**

**Asking Price** 300

**Method** Venmo, cash, credit card

**When Available** now

**Willing to Ship?** No

**More Pictures Available?** No





May 4, 2025

**Listing ID** 2025.180.536

**Type of Item** miscellaneous equipment

**Manufacturer** UNKNOWN

**Description** Cropping shears (English). Used in the finishing of fabric after fulling. These are large that sheep shears. Do have sheep shears also for sale. Asking \$50 each or \$90 if you purchase both.

**Location of Item** Gilford, New Hampshire

**Type of Loom**

**Loom Model**

**Weaving Width**

**No. Shafts**

**No. Treadles**

**Included Equipment**

**Asking Price** 50 each

**Method** cash

**When Available** now

**Willing to Ship?** Yes

**More Pictures Available?** No





May 4, 2025

**Listing ID** 2025.179.536

**Type of Item** miscellaneous equipment

**Manufacturer** UNKNOWN

**Description** Pair of antique Harness Holders dated 1864. One holder is missing a roller.

**Location of Item** Gilford, New Hampshire

**Type of Loom**

**Loom Model**

**Weaving Width**

**No. Shafts**

**No. Treadles**

**Included Equipment**

**Asking Price** 35

**Method** cash

**When Available** now

**Willing to Ship?** Yes

**More Pictures Available?** No







May 4, 2025

**Listing ID** 2025.178.536

**Type of Item** spinning equipment

**Manufacturer** OTHER

**Description** Restored antique Minor's Head.

**Location of Item** Gilford, New Hampshire

**Type of Loom**

**Loom Model**

**Weaving Width**

**No. Shafts**

**No. Treadles**

**Included Equipment**

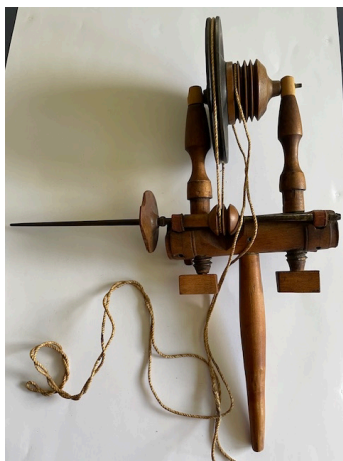
**Asking Price** 225

**Method** cash

**When Available** now

**Willing to Ship?** Yes

**More Pictures Available?** No





Apr 13, 2025

**Listing ID** 2025.168.536

**Type of Item** spinning wheel

**Manufacturer** UNKNOWN

**Description** Swiss/Austrian Parlor Wheel. This antique wheel with its unique turnings is beautifully crafted. The 28" wheel is set to the floor. Like many similar wheels, the spinner sits to the side parallel to the wheel. Because of the size of the wheel and the way it is set, it is very stable. This wheel has been featured in several publications, The initials, FV, are carved in the crosspiece for the spindle mount. The wheel with its ornate turnings and rings, I always romanced, was made by a very talented woodturner for his true love or commissioned by or for a lady of means. I brought it back from Europe and have never seen another so beautifully crafted.

**Location of Item** Laconia, NH

**Type of Loom**

**Loom Model**

**Weaving Width**

**No. Shafts**

**No. Treadles**

**Included Equipment**

**Asking Price** 1525

**Method** cash

**When Available** now

**Willing to Ship?** Yes

**More Pictures Available?** Yes





Apr 13, 2025

**Listing ID** 2025.165.536

**Type of Item** spinning wheel

**Manufacturer** UNKNOWN

**Description** Canadian Flat-rimmed Wheel Early 19th Century wheel comes from the French region of Ontario. Although it has a bobbin/flyer and is treadle operated it is a single drive belt with a tensioning device for the bobbin. The upright support of this wheel has been crafted from one turned piece sawn in half to make the two supports. The wheel has a replacement bobbin and flyer which is a copy of the original which was too worn to be repaired for heavy use. This is a great production wheel.

**Location of Item** Laconia, NH

**Type of Loom**

**Loom Model**

**Weaving Width**

**No. Shafts**

**No. Treadles**

**Included Equipment** Can be picked up in Laconia, NH area or by arrangement in Newburyport, MA area. If required, shipping and packing can be arranged, but buyer pays the additional expense.

**Asking Price** 975

**Method** cash

**When Available** now

**Willing to Ship?** Yes

**More Pictures Available?** No





Apr 13, 2025

**Listing ID** 2025.164.536

**Type of Item** spinning wheel

**Manufacturer** UNKNOWN

**Description** Walking Wheel This is a traditional wheel, early 1800's, with a "Bat Head" which pre-dates the "Minor's Head". This wheel was found in the servant's workroom in the home of a colonial general in Newport, RI

**Location of Item** Laconia, NH

**Type of Loom**

**Loom Model**

**Weaving Width**

**No. Shafts**

**No. Treadles**

**Included Equipment** Can be picked up in Laconia, NH area, Newburyport, MA or possible pick-up/meet up in Newport, RI. If required, shipping and packing can be arranged, but buyer pays the additional expense.

**Asking Price** 650

**Method** cash

**When Available** now

**Willing to Ship?** Yes

**More Pictures Available?** No





Apr 6, 2025

**Listing ID** 2025.160.536

**Type of Item** spinning wheel

**Manufacturer** UNKNOWN

**Description** Finnish 24" Split Saddle Wheel. Good production wheel. Age unknown/ probably early 1900's. Found in Finland. Has been in storage, so will need some tuning.

**Location of Item** Laconia, NH

**Type of Loom**

**Loom Model**

**Weaving Width**

**No. Shafts**

**No. Treadles**

**Included Equipment**

**Asking Price** 425

**Method** cash

**When Available** now

**Willing to Ship?** Yes

**More Pictures Available?** No





Apr 3, 2025

**Listing ID** 2025.157.653

**Type of Item** loom

**Manufacturer** OTHER

**Description** Manufacturer: Metier Clement Inc.. St-Justin, Co. Maskinonge, Quebec

**Location of Item** Mystic, CT

**Type of Loom** Counterbalance

**Loom Model**

**Weaving Width** 36"

**No. Shafts** 4

**No. Treadles** 4

**Included Equipment** 45w x 38d x 39h = footprint  
friction brake  
Direct Tie-up  
Breast Beam detaches to allow easier threading  
sectional back beam  
great shed!  
very sturdy and makes great rugs, blankets, pillows, shawls  
Includes: Lease sticks, various shuttles, 6, 10, 12, 15 dent Reeds, and a rattle

**Asking Price** 1000

**Method** cash

**When Available** now

**Willing to Ship?** No

**More Pictures Available?** Yes



Mar 24, 2025

**Listing ID** 2025.151.581

**Type of Item** loom

**Manufacturer** Glimakra

**Description** counter balance and countermarche older gilmakra.

**Location of Item** Putney, VT

**Type of Loom** Countermarche

**Loom Model** Standard

**Weaving Width** 120 cm

**No. Shafts** 8

**No. Treadles** 10

**Included Equipment** Comes with shuttles, 7 reeds, 5 temples, 2 yrd warping reel, vavstuga tie up, warping sticks, lots of texsolve heddles, bobbin winder, warping hook and a few other bits and bobs  
Side supports do not break down so you might need a truck to move

**Asking Price** \$3,000

**Method** Cash or local check

**When Available** now

**Willing to Ship?** No

**More Pictures Available?** Yes



Mar 22, 2025

**Listing ID** 2025.150.036

**Type of Item** spinning wheel

**Manufacturer** Schacht

**Description** Schacht-Reeves 30-inch single treadle, left-flier orientation, cherry. Purchased new in 2009. In perfect condition, spins like a dream. Schacht is no longer producing this wheel, but their recent price was above \$2,000. Reason for sale: downsizing. I love this wheel.

**Location of Item** Montpelier, Vermont

**Type of Loom**

**Loom Model**

**Weaving Width**

**No. Shafts**

**No. Treadles**

**Included Equipment** Lazy kate

**Asking Price** Make me an offer

**Method** Cash or certified bank  
cashier's check

**When Available** now

**Willing to Ship?** No

**More Pictures Available?** No





Mar 22, 2025

**Listing ID** 2025.149.647

**Type of Item** loom

**Manufacturer** PRIVATE/SELF BUILT

**Description** Gilmore style loom  
Beautiful, fully functional and totally refurbished.  
\* Reed is 4 dent, stainless steel. Reads "4-200-SS" and brand new.  
\* Loom includes 120 flat steel heddles per harness x 8 harnesses  
\* Total of 960 heddles  
Loom measurements:  
40" wide by 38" tall by 56" long  
Made of Cherry wood, built by woodworker Jerry Wayne Lewis in Rockport, MA in 1977  
Loom is in pristine condition.

**Location of Item** Felton, Delaware

**Type of Loom** Jack

**Loom Model**

**Weaving Width** 50 inches

**No. Shafts** 8

**No. Treadles** 12

**Included Equipment** Comes with 16 harnesses total.  
8 extra harnesses do not include heddles.

**Asking Price** 3000.00

**Method** cash

**When Available** now

**Willing to Ship?** No

**More Pictures Available?** Yes





Mar 22, 2025

**Listing ID** 2025.148.646

**Type of Item** loom

**Manufacturer** Leclerc

**Description** This loom is foldable to 25" and can be folded fully warped.

**Location of Item** Great Barrington MA

**Type of Loom** Counterbalance

**Loom Model** Fanny

**Weaving Width** 36

**No. Shafts** 4

**No. Treadles** 6

**Included Equipment** Bench, warp, extra heddles, and other accessories included. I have the original owner's manual for the next owner.

**Asking Price** 1200

**Method** cash, PayPal, Venmo

**When Available** now

**Willing to Ship?** No

**More Pictures Available?** Yes





Mar 10, 2025

**Listing ID** 2025.143.642

**Type of Item** loom

**Manufacturer** Leclerc

**Description** I am moving and need to depart with my beautiful & wide Nilus Leclerc Loom. My mom purchased this loom 35 years ago and it is in great condition. Loom has room to add 4 more harnesses. Dimensions are 68" long, 56" wide, and 49" tall. Wood is in good condition and new aprons have been added. I would love to find this loom a new home.

**Location of Item** Providence, RI

**Type of Loom** Jack

**Loom Model** Nilus

**Weaving Width** 60

**No. Shafts** 8

**No. Treadles** 10

**Included Equipment** Comes with extra heddles, 12 dent reed, many lease sticks, box of bobbins, and double beam manual. The bottom beam comes with 4 rake-like pieces that are attached to the double warp beam to turn into a sectional beam.

**Asking Price** 2,300.00

**Method** Cash, Venmo, PayPal, or Zillow

**When Available** now

**Willing to Ship?** No

**More Pictures Available?** Yes



Feb 17, 2025

**Listing ID** 2025.138.640

**Type of Item** warping reel

**Manufacturer** UNKNOWN

**Description** Hardwood warping reel with 4 yards per turn in very good condition. Heavy but disassembles easily.

**Location of Item** Middlebury, CT

**Type of Loom**

**Loom Model**

**Weaving Width**

**No. Shafts**

**No. Treadles**

**Included Equipment**

**Asking Price** \$450

**Method** Cash or PayPal

**When Available** now

**Willing to Ship?** No

**More Pictures Available?** Yes





Feb 17, 2025

**Listing ID** 2025.137.640

**Type of Item** loom

**Manufacturer** Gilmore

**Description** Gilmore Mini Wave Loom

**Location of Item** Middlebury, CT

**Type of Loom** Inkle

**Loom Model**

**Weaving Width** 4'

**No. Shafts** 2

**No. Treadles**

**Included Equipment** Metal pawls and ratchets (no longer available) comes with 200 mounted heddles (100 per frame), 2 lease sticks, and a strong shuttle.

**Asking Price** \$550

**Method** Cash or PayPal

**When Available** now

**Willing to Ship?** No

**More Pictures Available?** Yes





Feb 17, 2025

**Listing ID** 2025.136.640

**Type of Item** loom

**Manufacturer**

**Description** Inga Askling Swedish Folding Counterbalance Weaving Loom

**Location of Item** CT

**Type of Loom** Counterbalance

**Loom Model**

**Weaving Width** 24

**No. Shafts** 4

**No. Treadles** 4

**Included Equipment** The cutie folds flat, and uses the back beam supported by window sill/table to allow you to weave freely. If you are handy with tools, you can attach legs. This loom is compact, cute as a button with direct tie-up in very good to excellent condition

**Asking Price** 700

**Method** Cash or PayPal

**When Available** now

**Willing to Ship?** No

**More Pictures Available?** No





**Listing ID** 2025.135.640

**Type of Item** loom

**Manufacturer** Glimakra

**Description**

**Location of Item** CT

**Type of Loom** Countermarche

**Loom Model** Standard

**Weaving Width** 47

**No. Shafts** 12

**No. Treadles** 12

**Included Equipment** This loom is excellent condition and comes with the original bench and all the accessories (upper/lower lams, lease sticks, packing sticks, shaft holders, mallet, one stainless steel reed, Texsolv heddles, and a boat shuttle with bobbins) to get weaving in no time.

**Asking Price** 3500

**Method** Cash or PayPal

**When Available** now

**Willing to Ship?** No

**More Pictures Available?** No





Feb 17, 2025

**Listing ID** 2025.134.640

**Type of Item** loom

**Manufacturer** UNKNOWN

**Description** A Beautiful Handcrafted Cherry is 55" wide and 30" deep. very good to excellent condition, absolutely stunning and ready for you to take home and enjoy.

**Location of Item** CT

**Type of Loom** Counterbalance

**Loom Model**

**Weaving Width** 44

**No. Shafts** 4

**No. Treadles** 6

**Included Equipment**

**Asking Price** 750

**Method** Cash or PayPal

**When Available** now

**Willing to Ship?** No

**More Pictures Available?** Yes







Feb 2, 2025

**Listing ID** 2025.127.536

**Type of Item** miscellaneous equipment

**Manufacturer** UNKNOWN

**Description** Antique Floor Basket Swift (possibly Shaker).  
29 inches in height, circumference adjustable. New dowels added.

**Location of Item** Gilford, New Hampshire

**Type of Loom**

**Loom Model**

**Weaving Width**

**No. Shafts**

**No. Treadles**

**Included Equipment** Can pack and ship at buyer's expense.

**Asking Price** \$85.00

**Method** PayPal, cash, check

**When Available** now

**Willing to Ship?** Yes

**More Pictures Available?** No





Feb 2, 2025

**Listing ID** 2025.126.536

**Type of Item** miscellaneous equipment

**Manufacturer** OTHER

**Description** Antique Yarn Testing Machine manufactured by James H. Heal & Co. Halifax.

**Location of Item** Gilford, New Hampshire

**Type of Loom**

**Loom Model**

**Weaving Width**

**No. Shafts**

**No. Treadles**

**Included Equipment** This item can be shipped at additional cost. Be note it is extremely heavy. Possible collection an be arranged in Newburyport, MA area.

**Asking Price** \$475.00

**Method** PayPal, cash, check

**When Available** now

**Willing to Ship?** Yes

**More Pictures Availiable?** No





Feb 2, 2025

**Listing ID** 2025.125.536

**Type of Item** spinning wheel

**Manufacturer** OTHER

**Description** Thurston 24 inch English Saxony Wheel. It was hand turned by Jim Williamson of Timber Top in Leicester, England. It was commissioned by me in the early 70's in English Yew. The adjustment is a metal screw tensioning system. Brass bearings. Comes with three bobbins and distaff. It is one of the finest production wheels made.

**Location of Item** Gilford, New Hampshire

**Type of Loom**

**Loom Model**

**Weaving Width**

**No. Shafts**

**No. Treadles**

**Included Equipment** Possible local delivery arranged. If required, shipping and packing can be arranged, but buyer pays the additional expense.

**Asking Price** \$1325.00

**Method** PayPal, cash

**When Available** now

**Willing to Ship?** Yes

**More Pictures Available?** No





Feb 2, 2025

**Listing ID** 2025.124.636

**Type of Item** loom

**Manufacturer** OTHER

**Description** This is a Gesta Snickerfabrik floor loom, very like a Glimarka, imported from Sweden in 1977. It is a beautifully crafted loom, little used, and in very good condition.

**Location of Item** Freeport, Maine

**Type of Loom** Counterbalance

**Loom Model**

**Weaving Width** 47

**No. Shafts** 4

**No. Treadles** 8

**Included Equipment** 4 reeds, 4 shuttles, warping board, bench

**Asking Price** \$2000

**Method** Cash or certified check

**When Available** now

**Willing to Ship?** No

**More Pictures Available?** Yes





Jan 26, 2025

**Listing ID** 2025.123.635

**Type of Item** loom

**Manufacturer** UNKNOWN

**Description** Motivated seller. Moving. This is a very sweet antique table loom. There is a marking, presumably indicating the maker of the loom, but I have never been able to read it.

**Location of Item** Warwick, Rhode Island

**Type of Loom** Table

**Loom Model**

**Weaving Width** 14 inches

**No. Shafts** 4

**No. Treadles**

**Included Equipment** Possible doorstep/tailgate delivery within reasonable distance. Anxious to find a good home for this little loom.

**Asking Price** 400 obo: make an offer!

**Method** cash

**When Available** now

**Willing to Ship?** No

**More Pictures Available?** Yes





Jan 14, 2025

**Listing ID** 2025.116.059

**Type of Item** loom

**Manufacturer** AVL

**Description** AVL's rug looms are extremely sturdy and can hold an amazing tension. I have woven a few rugs plus other items such as table runners and a throw. It is very good for weaving anything from heavy rugs to lightweight fabrics. I am the second owner and although I've had it for many years, I have used it very little.  
It is air operated with air for raising the harnesses up and then down in two separate motions. Current cost for the loom is over \$39,000.

**Location of Item** Bradford, ME

**Type of Loom** Dobby - computer/electronic

**Loom Model**

**Weaving Width** 48"

**No. Shafts** 12

**No. Treadles**

**Included Equipment** Loom #02326, Built in 1997  
Air Compu-Dobby 4.5 P 12H  
Inserted eye heddles  
2 high capacity sectional warp beams  
Auto cloth take up  
Auto cloth advance  
Track for tension box or selvedge rollers  
Three Reeds

**Asking Price** 10.000

**Method** Zelle, Cash

**When Available** now

**Willing to Ship?** No

**More Pictures Available?** Yes



## Weavers' Guild of Boston Used Equipment List





Jan 11, 2025

**Listing ID** 2025.114.575

**Type of Item** loom

**Manufacturer** Leclerc

**Description** This Mira II loom (similar to the Fanny) built in 2021. It is a very solid and sturdy loom that has a wide shed, and is easy to treadle. With easy access to the heddles, this loom is a breeze to thread. If I had more space I would hold on to this gem. It is versatile and exceptionally well built.

**Location of Item** Putney

**Type of Loom** Counterbalance

**Loom Model** Fanny

**Weaving Width** 45"

**No. Shafts** 4

**No. Treadles** 6

**Included Equipment** A Leclerc Raddle - 43"  
10 dent and 12 dent reeds

**Asking Price** \$3,000

**Method** Cash, ApplePay, Venmo,  
PayPal

**When Available** now

**Willing to Ship?** No

**More Pictures Available?** Yes







Jul 19, 2024

**Listing ID** 2025.113.592

**Type of Item** loom

**Manufacturer** Beka

**Description** Bought new in 2001 while earning a textile degree. Much loved but I'm moving to senior residence where there is little room.

**Location of Item** Plymouth, MA

**Type of Loom** Jack

**Loom Model**

**Weaving Width** 60"

**No. Shafts** 8

**No. Treadles** 10

**Included Equipment** Includes an extra reed, heddles, shuttles, bench, yarn, & textbooks.

**Asking Price** REDUCED TO  
\$1900

**Method** Cash or certified bank check

**When Available** now

**Willing to Ship?** No

**More Pictures Available?** Yes



Jan 8, 2025

**Listing ID** 2025.109.633

**Type of Item** loom

**Manufacturer** OTHER

**Description** Herald Looms - Antique, but I am not sure what year it's from, I hadn't heard of Herald looms before getting this one.  
-In good condition for an antique but needs a couple of minor repairs: the two wooden pieces that hold up the sectional warp beam need to be repaired with wood glue, or replaced and the ribbon tapes need to be repaired or replaced.  
-Currently disassembled due to its size and I needed to move it through a doorway.

**Location of Item** Mont Vernon, NH

**Type of Loom** Jack

**Loom Model**

**Weaving Width** 47 in.

**No. Shafts** 8

**No. Treadles** 10

**Included Equipment** 1 shuttle with a bobbin and extra heddles included  
\*warping board in back of photo NOT included\*

**Asking Price** 400

**Method** Mont Vernon, NH

**When Available** ASAP

**Willing to Ship?** No

**More Pictures Available?** No



Jun 10, 2024

**Listing ID** 2025.107.583

**Type of Item** spinning wheel

**Manufacturer** Ashford

**Description** New: New Zealand Ashford, scots tension -brake system  
(15"w, 33.5"h, 36"d, wheel diameter 22")

**Location of Item** South Burlington

**Type of Loom**

**Loom Model**

**Weaving Width**

**No. Shafts**

**No. Treadles**

**Included Equipment** PRICE REDUCED!

**Asking Price** 650

**Method** cash, check

**When Available** now

**Willing to Ship?** No

**More Pictures Available?** Yes





Dec 14, 2024

**Listing ID** 2025.104.630

**Type of Item** loom

**Manufacturer** Leclerc

**Description** Bought brand new from LeClerc in Quebec in January 2024. Just not that into weaving. My loss is your gain, save \$1000 on basically a brand new loom. Paid \$3517.

**Location of Item** Brunswick, Maine

**Type of Loom** Counterbalance

**Loom Model** Fanny

**Weaving Width** 45

**No. Shafts** 4

**No. Treadles** 6

**Included Equipment** 9 yard Warping board included  
PRICE REDUCED!

**Asking Price** \$2500

**Method** Venmo, paypal, cashapp, cash

**When Available** now

**Willing to Ship?** No

**More Pictures Available?** No





Jan 5, 2025

**Listing ID** 2025.002.536

**Type of Item** spinning wheel

**Manufacturer** OTHER

**Description** Patent Pendulum Wheel  
Patented May 22, 1868 E. Glendillen. This counterbalance or pendulum wheel enables the spinner to sit and still spin on the equivalent of a great wheel. It is rather similar in motion as a woolen mule and is best suited for rovings. It can take a bit of skill to master, but great fun and speedy production. The treadle and wood tension handle have been replaced – copied from the worn parts. Fun wheel when exhibiting. The wheel has been unassembled to make it easier to transport. Please note the wheel is approximately 52 inches in diameter and the largest piece is 78 inches in height.

**Location of Item** Gilford, New Hampshire

**Type of Loom**

**Loom Model**

**Weaving Width**

**No. Shafts**

**No. Treadles**

**Included Equipment**

**Asking Price** 1650.00

**Method** cash

**When Available** now

**Willing to Ship?** Yes

**More Pictures Available?** No





Nov 7, 2024

**Listing ID** 2025.001.619

**Type of Item** miscellaneous equipment

**Manufacturer** PRIVATE/SELF BUILT

**Description** These inserted eye metal heddles were manufactured by my grandfather who ran Paragon Heddle Company in Worcester, MA until the late 1970's. He manufactured a batch of approximately 20,000 during a downturn in anticipation of a large customer order that never materialized. This picture is of one of the bundles with 500 heddles. They measure 21-3/4" end-to-end and the heddle bar opening at the top and bottom of the heddles are each 5/8" L x 3/16" W.  
I have no idea how to price these. Online comparisons seem all over the place. I'm mostly interested in having them in the hands of someone who will appreciate/use them. Any reasonable offer will be accepted.

**Location of Item** Westborough, MA

**Type of Loom**

**Loom Model**

**Weaving Width**

**No. Shafts**

**No. Treadles**

**Included Equipment**

**Asking Price** \$20 or Best Offer

**Method** Cash or certified bank check.  
Buyer pays shipping.

**When Available** now

**Willing to Ship?** Yes

**More Pictures Available?** No





Jun 10, 2024

**Listing ID** 2025.000.584

**Type of Item** loom

**Manufacturer** Harrisville Designs

**Description** A heavy-duty loom with sectional warp beam designed for rug weaving. The loom is in excellent and complete condition and has the original manual and bill of sale from Harrisville Designs.

**Location of Item** North East PA (in the NW corner near Erie)

**Type of Loom** Countermarche

**Loom Model** Harrisville Rug Loom

**Weaving Width** 45

**No. Shafts** 4

**No. Treadles** 8

**Included Equipment** Includes:  
Height-adjustable built-in bench  
Warp Extender/Tension Equalizer  
Collingwood Shaft Switching Mechanism  
Books, shuttles and tools are also available--inquire

**Asking Price** 4000

**Method** PayPal. Venmo, Zelle and cash

**When Available** now

**Willing to Ship?** No

**More Pictures Available?** Yes





Nov 21, 2024

**Listing ID** 2024.999er.624

**Type of Item** spinning equipment

**Manufacturer** OTHER

**Description** Strauch Finest drum carder

**Location of Item** Ithaca NY

**Type of Loom** Table

**Loom Model**

**Weaving Width**

**No. Shafts**

**No. Treadles**

**Included Equipment** Hardly used

**Asking Price** 700

**Method** Cash, PayPal, check

**When Available** now

**Willing to Ship?** Yes

**More Pictures Available?** No







Oct 27, 2024

**Listing ID** 2024.999dp.616

**Type of Item** loom

**Manufacturer** OTHER

**Description** Built like Leclerc Mira II. Ready to rehab. Needs new cloth on beams, including lots of new materials, three reeds, inserted eye heddles, shuttles, Bring help and a large vehicle to move this!

**Location of Item** Haverhill, MA

**Type of Loom** Counterbalance

**Loom Model** OTHER

**Weaving Width** 60

**No. Shafts** 4

**No. Treadles** 5

**Included Equipment** Description of the similar Leclerc Mira II - [http://www.leclerclooms.com/cat\\_leus/US18.pdf](http://www.leclerclooms.com/cat_leus/US18.pdf)

**Asking Price** 200.00

**Method** cash

**When Available** now

**Willing to Ship?** No

**More Pictures Available?** Yes





Jun 16, 2024

**Listing ID** 2024.999cb.005

**Type of Item** warping reel

**Manufacturer** PRIVATE/SELF BUILT

**Description** Horizontal warping reel  
2 yard circumference  
28" front to back; 48" long

**Location of Item** Leominster, MA

**Type of Loom**

**Loom Model**

**Weaving Width**

**No. Shafts**

**No. Treadles**

**Included Equipment** PRICE REDUCED!

**Asking Price** \$50

**Method** cash and check

**When Available** now

**Willing to Ship?** No

**More Pictures Available?** No

